



**Supporting™
Communities**
Empowering Society

Colm McDaid

Chief Executive Officer

**TPAS
CYMRU
CONFERENCE**

‘Building
Great
Communities’

Content

- Who am I?
- Who is Supporting Communities?
- N Ireland – facts and figures
- Great Communities – 3 regional examples

Colm McDaid



Coming from Omagh, Co Tyrone, Colm completed his Housing Management degree at the University of Ulster, Magee in 1991 and spent a further year on the Graduate Management

Development Programme where he gained the Henley Certificate in Management.

Since May 1992 he has been working with Clonard Residents Association where he was involved in a major redevelopment scheme acting as a Liaison Officer between the local community, the Housing Executive's District and Regional staff as well as various other statutory and voluntary bodies.

Colm is also involved in general community development work on behalf of the Resident's Association including the Springvale Development Scheme; environmental improvements in the Clonard area and the co-ordination of a Clonard history project.



Colm McDaid, has been working with [@SuppCommunities](#) for 25 years - what an amazing commitment to [#communitydevelopment](#) and [#tenantparticipation](#).

Happy Work Anniversary, Colm!
[#makingadifference](#)



Ballintoy *'Home'*





Tourist



40
YEARS



Championing



Tenant

AND



Community
Participation

Developing
Community
Groups

Supporting
Active
Citizenship

Building
Cohesive
Communities



SupportingTM Communities

Empowering Society

Empowering
Society

WE SUPPORTED



540

ACTIVE
GROUPS



256

INTER-AGENCY
MEETINGS



107/ 72

COMMITTEE
MEETINGS / AGMS



Our Services



Community
Development



Social
Enterprise



Training



Funding
Support



Tenant
Participation



Business/Admin
Support



Digital Inclusion



Information Services



**Supporting
Communities**
Empowering Society

**We Build Strong, Cohesive
Communities**

Impact Report
Mid & East Antrim
2017-18



For every **£1**
invested, **£9.55**
of social and
economic value
is returned

What We Do

We are an independent charitable organisation with nearly 40 years' experience of championing tenant and community participation through developing groups, supporting active citizenship and building cohesive communities.

As the only independent body in the NI social housing sector, we aim to deliver essential services to all parts of the community at the highest level without prejudice.

We improve community engagement, confidence, sustainability and inclusiveness, thus ensuring the delivery of better and more responsive services.

Social Impact (SROI)

We have used the Social Value Engine online tool (<https://socialvalueengine.com>), which enabled us with independent support, led by Rose Regeneration who developed the Social Value Engine, to identify a monetary value to represent the social impact created by our services, with our stakeholders.

To ensure maximum engagement and participation we did this intensively in the Mid and East Antrim Area, thus providing a lens on one of our 13 areas of operation through which to demonstrate our social value.



55
Members
Groups



45,000
Volunteer
Hours
Generated



14,000
People
Benefitting

supportingcommunities.org

[f /SupportingCommunities](https://www.facebook.com/SupportingCommunities)

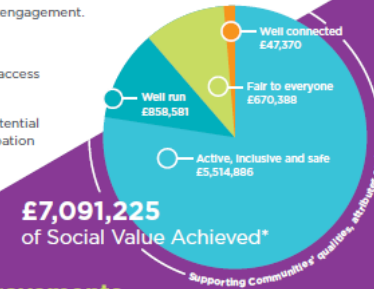
[@SuppCommunities](https://twitter.com/SuppCommunities)

Our Social Value

£1: £9.55

Stakeholder Outcomes

- Improved efficiency and dynamism of the community and voluntary sector.
- Improved leadership and empowerment for individuals in the community.
- More substantive links between organisations and service providers.
- Strengthened public and civic engagement.
- Improved life satisfaction.
- Improved social inclusion and access to community resources.
- Increased volunteering and potential for greater community participation and development.
- Reduction in crime.



BIG Improvements

- Improved efficiency and dynamism of the community and voluntary sector: **380 volunteers**.
- Strengthened public and civic engagement: **338 people**.
- Improved leadership and empowerment for individuals in the community: **230 leaders**.
- Improved life satisfaction: **13,850 residents**.
- More substantive links between organisations and service providers: **19 organisations**.
- Improved social inclusion and access to community resources: **2,028 people**.
- Increased volunteering and potential for greater community participation and development: **338 volunteers**.
- Reduction in crime: **6,000 residents**.

*Impact categorised against the domains in the Bristol Accord:
http://www.sib.org.uk/attachments/jessica_bristol_accord_sustainable_communities.pdf

 **Supporting
Communities**
Empowering Society
supportingcommunities.org

 **SOCIAL VALUE
ENGINE**
RoseRegeneration

 **Rural Community Network**
Rural Community Network



Private Rented Sector:
17% of market



**Supporting Communities
appointed as the
Independent Tenant Organisation
in 2016**

**Tenant Participation Strategy
for Northern Ireland
2015 - 2020**



Our position

Challenges



Debt



**DIGITAL
INCLUSION**



**Maintenance
and
Investment**



**Political
Environment**



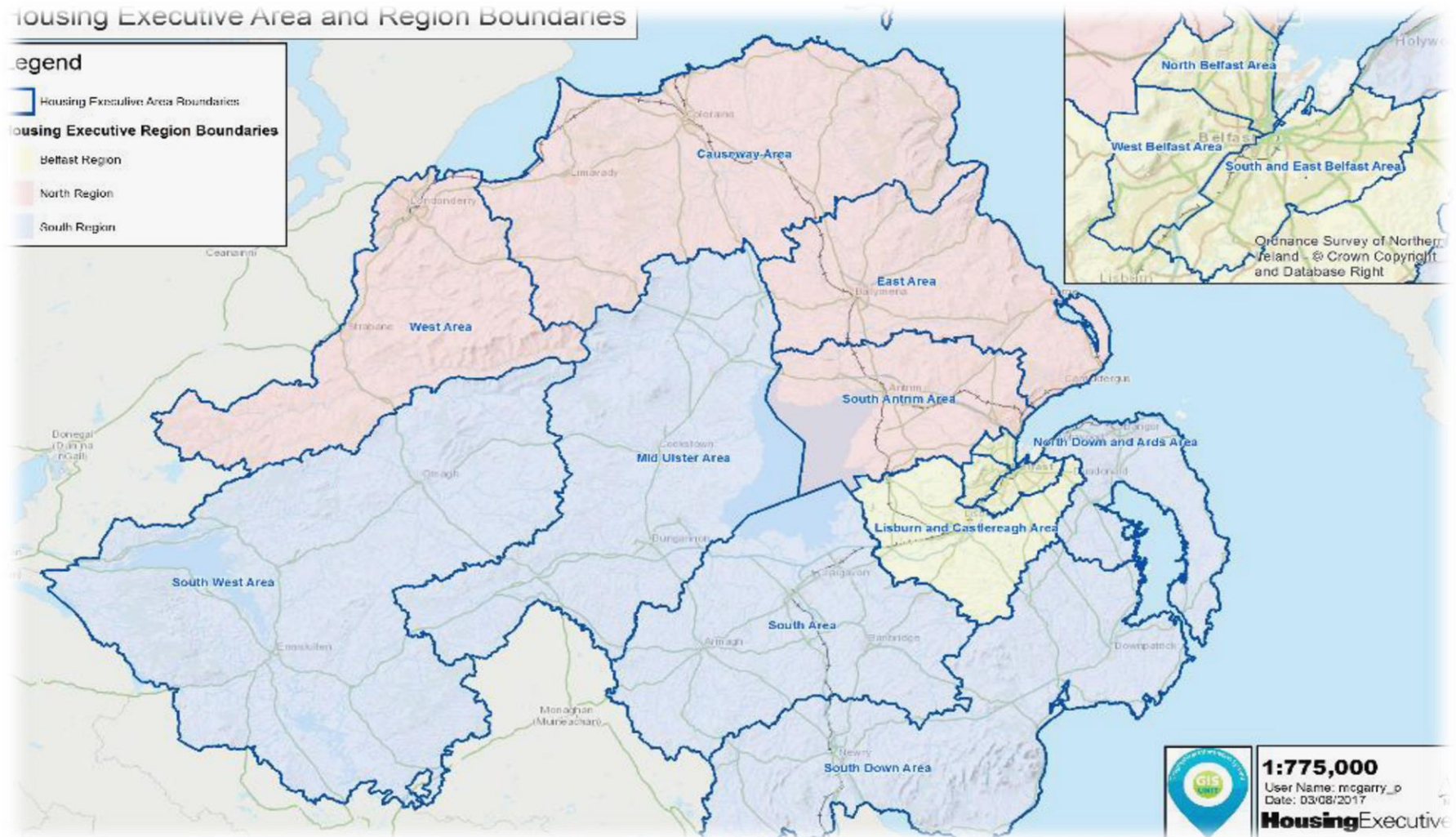
**Roll out of
Universal
Credit**



Affordability



Great Communities



Drumellan

Craigavon, County Armagh



**SupportingTM
Communities**
Empowering Society



- Estate Based Strategy designed in mid 1990's to deal with derelict houses, anti-social behaviour and deprivation.
- Implemented and facilitated strong working partnerships with Statutory Agencies.



Drumellan - 1993



Drumellan - 2019

Drumellan

- Selective Demolition provided new green spaces
- Community Group leases 6 NIHE properties and provides:
 - ✓ Family Learning Centre – programme of activities , recreational and educational classes
 - ✓ Social Programmes for the wider community
 - ✓ Children & Young Peoples Centre which provides high quality childcare at affordable prices (9 staff)

Doury Road

Ballymena, County Antrim



**SupportingTM
Communities**
Empowering Society





Regeneration

- Old steel “prison” fences replaced
- Entrances to estate upgraded
- Trees and planting all round estate to improve environment.
- Community garden improved
- Paths and street lighting improved
- All agencies working together with community to improve the area for the future.
- Dealt with the issue of waste ground



A blue wavy banner is mounted on a dark stone wall. The banner is divided into two sections by a central dip. The top section contains the text 'Welcome to' and the bottom section contains 'Doury Road'. The banner has a slightly irregular, hand-painted appearance.

Welcome to

Doury Road

Killynure

Carryduff, County Down



**Supporting[™]
Communities**
Empowering Society



Killynure
community/Association



Aaron, Steve and Dave... Graduation day 2018

Building personal capacity

Aaron and Dave left school with zero qualifications.

- ✓ They started their personal development journey in 2014 and completed the full suite of Supporting Communities Accredited courses...
- ✓ ...including the Social Enterprise Level 2 and 3 courses. This allowed them access to Ulster University to complete the Adv. Diploma in Social Enterprise
- ✓ They jointly won the students of the year award in 2018
- ✓ They are now in the process of setting up leisure and service Social Enterprise businesses and developing community facilities in the area



VIEW LOOKING INTO THE SITE FROM CHURCH ROAD

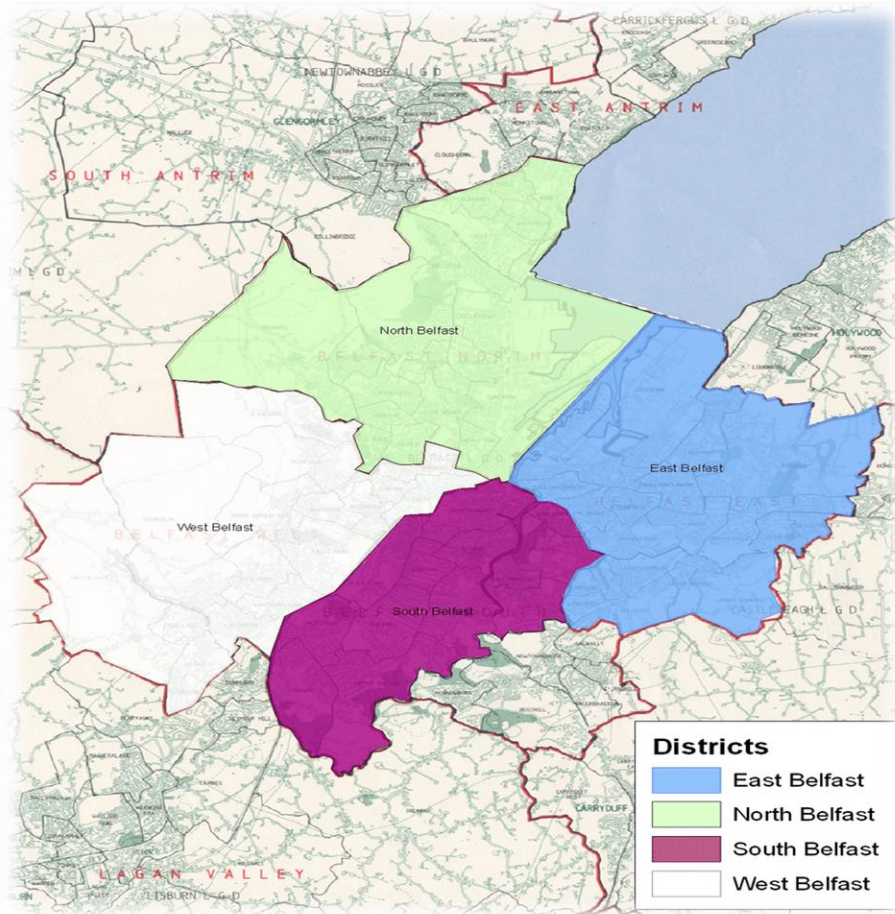


PEDESTRIAN GATE LEADING TO EXISTING PLAYING PITCH & BUILDINGS



Peace Walls

Belfast



**Supporting™
Communities**
Empowering Society

**Housing
Executive**







@Colm_SuppComm



colm@supportingcommunities.org



**Supporting[™]
Communities**
Empowering Society